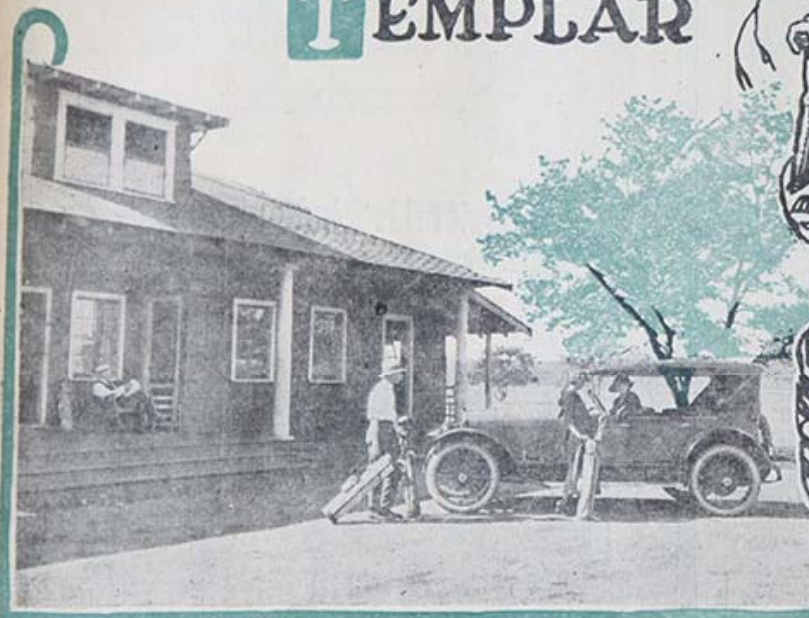


# GOLFING at MEADOW PARK in a TEMPLAR



AT THE CLUB HOUSE.

WHETHER it's a week end fishing trip or a jaunt out to the golf links, the Sportette is found to meet the most exacting requirements. It is but recently that these low, racy models have sprung into popularity as an all around sport car.

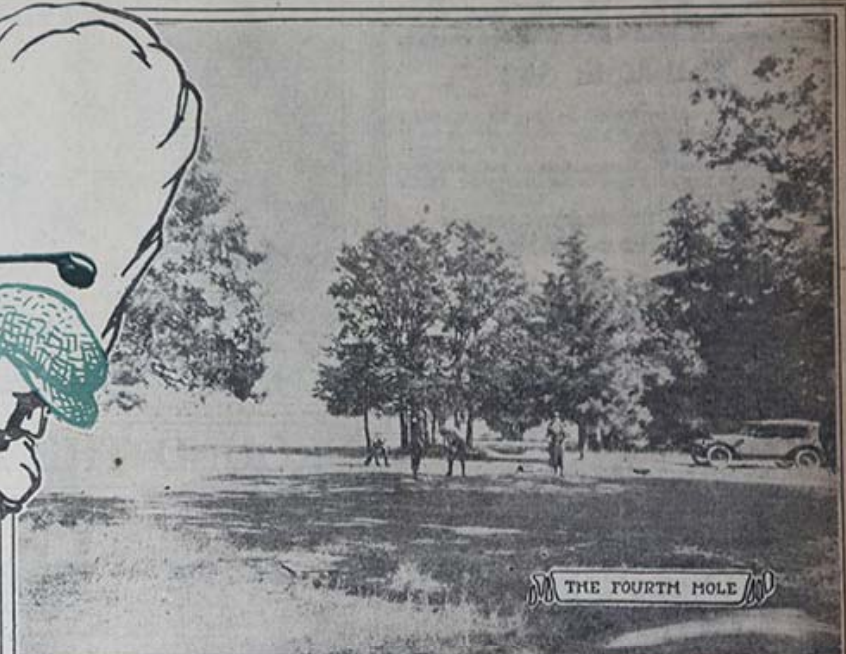
Last week a party from the Templar Motor Car Company and a Ledger representative visited the golf links at Meadow Park in a Templar Sportette to prove the adaptability of the model for sport use.

In years past the larger and heavier types of cars were much in evidence. Nowadays the demands of the motoring public call for a lighter car. Perhaps economy is the greatest reason for the advent of the Sportette. Light in structure, yet rigid enough for the most strenuous work, it reduces gasoline consumption. Of second consideration, perhaps, is appearance. Low and racy in design, it suggests rambles on the open road to the mountains, beaches and golf links.

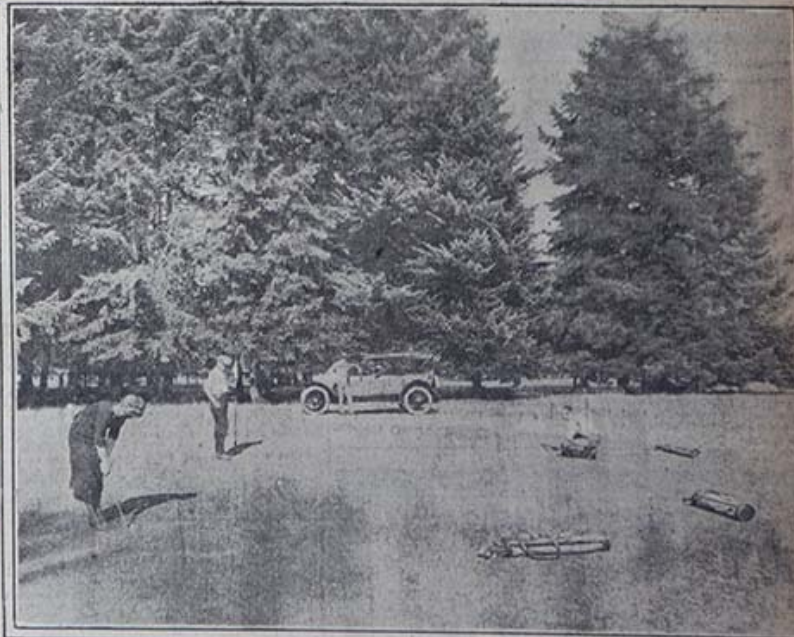
The Templar cars are distributed in Tacoma by G. C. Hansen. The cars are a favorite amongst motorists for the careful attention that is paid to detail. A careful inspection of a Templar reveals the fine and careful workmanship of the manufacturer.

As for speed and endurance, "Cannonball" Baker established a cross-continent run from New York to Los Angeles in 6 days, 17 hours, 23 minutes and 34 seconds recently. The trip was made under most severe weather conditions and over some of the roughest roads in the country. This is but one of several feats chalked up to the credit of the sturdy little car.

Other models on Mr. Hansen's display floor are the five-passenger touring model, two-passenger roadster, five-passenger sedan and the three-passenger coupe. They have proved immensely popular since their introduction in Tacoma.



THE FOURTH HOLE



PUTTING ON THE SECOND GREEN